

**Sayı** : 38591462 - 010.07.03 - 2020 - 1339

12/05/2020

Konu : Yeni ve Yürürlüğe Girecek Güney Kore Çevre Kanunları**Sirküler No :583**

Sayın Üyemiz,

Uluslararası Deniz Ticaret Odası(International Chamber of Shipping-ICS) tarafından gönderilen 30 Nisan 2020 tarih ve MC(20)38 sayılı Ek'te sunulan yazıda, Güney Kore'nin uygulamaya başlayacağı hız azaltımı ve yeni SO_x Emisyon Kontrol Alanı (SO_x Emission Control Area-ECA) hakkındaki bilgiler Odamıza iletilmiştir.

Bahse konu yazıda, Güney Kore Okyanus ve Balıkçılık Bakanlığı (Ministry of Oceans and Fisheries-MOF) tarafından gönüllü Gemi Hızını Azaltma (Vessel Speed Reduction-VSR) Programı ve SECA dahil olmak üzere denizcilik faaliyetlerinden kaynaklanan hava kirliliğini azaltmak için önlemler alındığı bildirilmiştir.

Yazıda devamla, Aralık 2019'da yürürlüğe giren liman ve diğer alanlarda hava kalitesinin iyileştirilmesine yönelik özel yasa kapsamında, Busan, Ulsan, Yeosu, Gwangyang ve Incheon ana limanlarındaki VSR Programı Deniz Alanları içinde, gemilerin kendi istekleri ile hızlarını belirli bir seviyenin altına azaltmaları halinde liman ücretlerinde indirim yapılacağı, VSR Programı Deniz Alanları'nın her limandaki belirli deniz fenerlerinden 20 deniz mili yarıçaptan oluştuğu, VSR Programı hakkında daha fazla bilgiye Ek'te sunulan yazıda belirtilen link üzerinden ulaşılabileceği bildirilmektedir.

Ayrıca yazıda, MOF tarafından, gemilerin maksimum kükürt içeriği % 0,1 olan yakıt kullanmalarını gerektiren SECA açıklanmış olup, SECA'nın aşağıda belirtilen 2 aşamada uygulanacağı belirtilmiştir:

1. 01.09.2020 tarihinden itibaren, Hadong limanı ve Pyeongtaek-Dangjin dahil olmak üzere Busan, Incheon, Ulsan, Yeosu, Gwangyang limanlarında rıhtımda bulunan veya demirlemiş gemilerin maksimum % 0,1 kükürt içeriğine sahip yakıtlar kullanması gerekmektedir. Gemilerin, bağlama veya demirleme işlemlerini tamamladıktan sonra 1 saat içinde uyumlu yakıtla geçmeleri, ayrılıştan 1 saat öncesine kadar uyumlu yakıt kullanmaya devam etmeleri istenmektedir.

2. 01.01.2022 tarihinden itibaren, belirlenen SECA bölgesinde iken gemilerin uyumlu yakıt kullanması gerekmektedir.

Güney Kore tarafından uygulanacak olan SECA bölgesinin kapsamı da dahil olmak üzere konu ile ilgili detaylı bilgi Ek'te sunulan yazıda yer almaktadır.

Bilgilerinize arz ve rica ederim.

Saygılarımla,

e-imza
İsmet SALİHOĞLU
Genel Sekreter



Bu belge, 5070 sayılı Elektronik İmza Kanuna göre Güvenli Elektronik İmza ile İmzalanmıştır.

Evrakı Doğrulamak İçin : <https://ebys.denizticaretodasi.org.tr/enVision/Dogrula/5N5KPP>Bilgi için: Alper Mergen Telefon: 0212 252 01 30/246 E-Posta: alper.mergen@denizticaretodasi.org.tr

Meclis-i Mebusan Caddesi No: 22 34427 Fındıklı - Beyoğlu - İstanbul Türkiye

Tel : +90 (212) 252 01 30 Faks: +90 (212) 293 79 35

Web: www.denizticaretodasi.org.tr E-mail: iletisim@denizticaretodasi.org.tr Kep: imeakdto@hs01.kep.tr.

Odamızda
ISO 9001:2015
Kalite Yönetim
Sistemi
uygulanmaktadır.

**Ek:**

- 1- İlgili Yazı (2 sayfa)
- 2- İlgili Yazı Ek'i (6 sayfa)

Dağıtım:**Gereği:**

- Tüm Üyeler (WEB sayfası ve e-posta ile)
- Türk Armatörler Birliği
- S.S. Gemi Armatörleri Mot. Taş. Koop.
- Vapur Donatanları ve Acenteleri Derneği
- İMEAK DTO Meslek Komite Bşk.
- İMEAK DTO Şubeleri ve Temsilcilikleri
- GİSBİR
- TÜRK LİM
- KOSDER
- Gemi Makineleri İşletme Mühendisleri Odası
- Türk Uzakyol Gemi Kaptanları Derneği

Bilgi:

- Meclis Başkanlık Divanı
- Yönetim Kurulu Başkan ve Üyeleri
- İMEAK DTO Çevre Komisyonu



Bu belge, 5070 sayılı Elektronik İmza Kanuna göre Güvenli Elektronik İmza ile İmzalanmıştır.

Evrakı Doğrulamak İçin : <https://ebys.denizticaretodasi.org.tr/enVision/Dogrula/5N5KPP>

Bilgi için: Alper Mergen Telefon: 0212 252 01 30/246 E-Posta: alper.mergen@denizticaretodasi.org.tr

Meclis-i Mebusan Caddesi No: 22 34427 Fındıklı - Beyoğlu - İstanbul Türkiye

Tel : +90 (212) 252 01 30 Faks: +90 (212) 293 79 35

Web: www.denizticaretodasi.org.tr E-mail: iletisim@denizticaretodasi.org.tr Kep: imeakdto@hs01.kep.tr



Odamızda
ISO 9001:2015
Kalite Yönetim
Sistemi
uygulanmaktadır.

This Circular and its attachments (if any) are confidential to the intended recipient and may be privileged. If you are not the intended recipient you should contact ICS and must not make any use of it.

30 April 2020

MC(20)38

TO: MARINE COMMITTEE

Copy: All Members and Associate Members (for information)

NEW AND UPCOMING ENVIRONMENTAL LAWS IN SOUTH KOREA

Action required: *Members are invited to note the information on voluntary speed reduction limits and a new ECA in South Korea.*

Members are informed that the Ministry of Oceans and Fisheries (MOF) of the Republic of Korea have announced measures, including a voluntary Vessel Speed Reduction (VSR) Program and a SOx Emission Control Area (ECA), to reduce air pollution from shipping.

Under the special act on air quality improvement in port and other areas which took effect in December 2019, ships inside the designated VSR Program Sea Areas in the five major ports of Busan, Ulsan, Yeosu, Gwangyang and Incheon have their port fees discounted if they voluntarily reduce their speeds below certain specified levels. The VSR Program sea areas span 20 nautical miles in radius from specific lighthouses in each port. Further information on the VSR Program can be found at the following link:

[Republic of Korea - Vessel Speed Reduction Program](#)

The MOF has also announced a SOx ECA where ships will be required to use fuel with a maximum sulphur content of 0.10%. The ECA will be implemented in the following 2 stages:

1. From 1 September 2020, ships at berth or at anchor in the ports of Busan, Incheon, Ulsan, Yeosu, Gwangyang (including Hadong port) and Pyeongtaek-Dangjin will be required to burn fuel with a maximum sulphur content of 0.10%. Ships will be required to changeover to compliant fuel within 1 hour after completing anchoring or mooring and will have to continue burning compliant fuel up to 1 hour before completion of heaving in anchor or de-berthing.
2. From 1 January 2022, ships will be required to use compliant fuel while they are inside the designated SOx ECA.

Further information, including the extent of the SOx ECA, can be found in the technical information document from Korean Registry attached at **Annex**.

Members are requested to share the information with their member shipowner companies.

Questions or comments should be addressed to the undersigned.

Sunil Krishnakumar
Senior Technical Advisor

Annex – Korean Register Technical Instruction on ECA in Republic of Korea



TECHNICAL INFORMATION

36 Myeongji ocean city 9-ro,
Gangseo-gu, Busan, 46762
The Republic of Korea

Phone : +82-70-8799-8306
Fax : +82-70-8799-8319
E-mail : statutory@krs.co.kr
P.I.C : Kim Moon-kyoung

No : 2020-ETC-01
Date : 20 January, 2020

Subject : Designation of 『SOX Emission Control Area』 in Republic of Korea

The Ministry of Oceans and Fisheries has announced the 『SOX Emission Control Area』 in major Korea Port, which strengthens the sulfur content standard of ship fuel oil to 0.1% or less according to Article 10 (1) of the 『The Special Act on the Improvement of Air Quality in Port Areas, Etc』.

1. Content

A. Emission Control Port : Busan Port, Incheon Port, Ulsan port, Yeosu Port, Gwangyang Port(Including Hadong port), Pyeongtaek-Dangjin Port

B. Emission Control Area

- 1) (Incheon, Pyeongtaek-Dangjin Area) 37 degrees 36 minutes 00 seconds north latitude, 126 degrees 33 minutes 42 seconds east longitude (near Daebeok-ri, Gimpo-si), 37 degrees 10 minutes 00 seconds north latitude, 126 degrees 06 minutes 30 seconds (south-end of Mungap island in Incheon), 37 degrees 02 minutes 54 seconds north latitude, Sea level inside the line that connects 126 degrees 29 minutes 00 seconds (near Seokmungak, Dangjin-si)
- 2) (Yeosu and Gwangyang Ports) 34 degrees 35 minutes 24 seconds north latitude, 127 degrees 48 minutes 20 seconds east longitude (Southeast end of Dolsan-do, Yeosu) 34 degrees 35 minutes 24 seconds north latitude, 128 degrees 00 minutes 26 seconds north latitude 34 degrees 42 minutes 42 Cho, line connecting the branch at 128 degrees 00 minutes 26 seconds (Namhae-gun Imman) and 34 degrees 56 minutes 22 seconds north, 127 degrees 52 minutes 06 seconds east and 34 degrees 56 minutes 46 seconds north, and 127 degrees 51 minutes

56 seconds east Sea level inside the line connecting points (Noryang Bridge)

- 3) (Busan sea area) 35 degrees 09 minutes 36 seconds north latitude, 129 degrees 11 minutes 32 seconds east longitude (Southeast end of Cheongsapo, Middle East, Busan), 35 degrees 09 minutes 04 seconds north latitude, 129 degrees 11 minutes 44 seconds east long, Appendix 1 of Enforcement Decree of the Maritime Safety Act The outer arc of the special area of traffic safety in Busan area, 34 degrees 58 minutes 46 seconds north, 129 degrees 04 minutes 14 seconds east, 34 degrees 55 minutes 00 seconds north, 128 degrees 50 minutes 00 seconds east, 34 degrees 58 minutes north latitude 41.5 Second, east of 128 degrees 49 minutes 19.5 seconds (east side of the entrance of the port of Gadeok-su-do), north latitude 35 degrees 02 minutes 01.4 second, east of 128 degrees 47 minutes 37.8 seconds (buoy of the 12th port of Gadeoksudo arrival port), 35 degrees 03 minutes north of 19.5 Sea level inside the line that connects the points at 128 degrees 43 minutes 23.5 seconds (East Route No. 20 Buoy, Gadeok-Su Island), 35 degrees 05 minutes 42 seconds north, and 128 degrees 42 minutes 53 seconds east (western end of Deok-dong, Changwon-si)
- 4) (Busan port west side sea area) 35 degrees 03 minutes 19.5 seconds north latitude, 128 degrees 43 minutes 23.5 seconds east longitude (buoy No. 20 route of entry port of Gadeoksudo island), 34 degrees 58 minutes 30 second north latitude, 128 degrees 45 minutes 21 second longitude (Garsan-do, Geoje-si)), 34 degrees 55 minutes 00 seconds north latitude, 128 degrees 50 minutes 00 seconds east longitude, 34 degrees 58 minutes north latitude 41.5 seconds northeast, 128 degrees 49 minutes 19.5 seconds east longitude (east side of the entrance to the port of Gadeoksudo), 35 degrees 02 minutes 01.4 seconds north latitude, Line that connects the points at 128 degrees 47 minutes 37.8 seconds in Tokyo, buoyed at No. 12 entry port of Gadeok-Sudo, 35 degrees 03 minutes and 19.5 seconds north latitude, and buoys at No. 20 buoy at No. 20, 128 degrees 43 minutes and east longitude. Sea surface inside (only for ship using Busan New Port)
- 5) (Ulsan port area) Sea area within the arc of 6.0 mile (outside arc of the special traffic safety

area in Ulsan area) centered on 35 degrees 24 minutes 37 seconds north latitude and 129 degrees 27 minutes 52 seconds long east and Ulsan port according to Article 3 of the Port Act Sea level (including Mipo Port)

*** Refer to below drawing**

C. Effective date

1) From 1st September, 2020 to 31st December 2021

: From 1 hour after completion of anchoring or mooring to 1 hour before completion of heave in anchor or de-berthing

2) On or after 1st January, 2022

: From entry into Sox Emission control Area until the exit

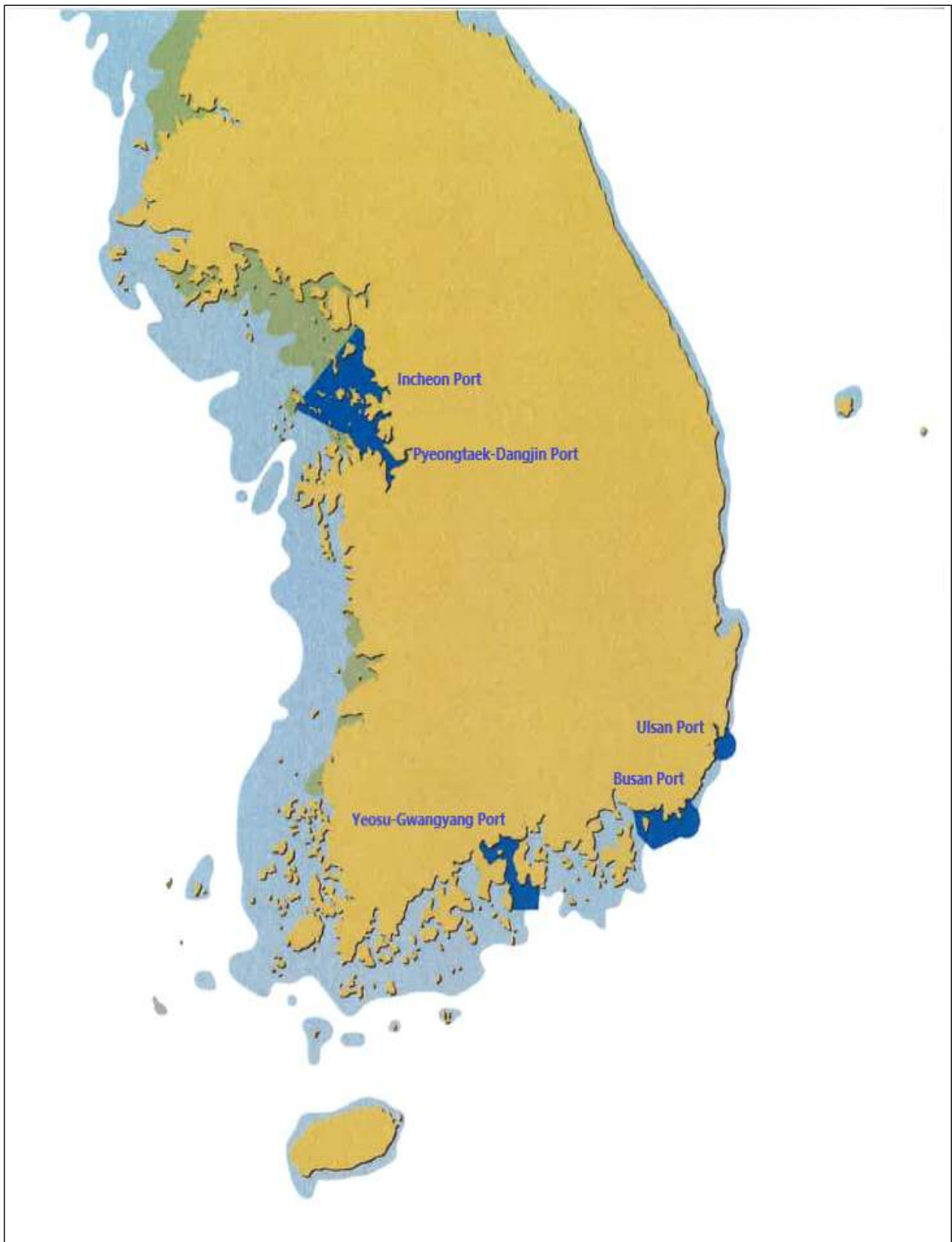
Distributions : KR surveyors, Ship owners, Other relevant parties

Disclaimer :

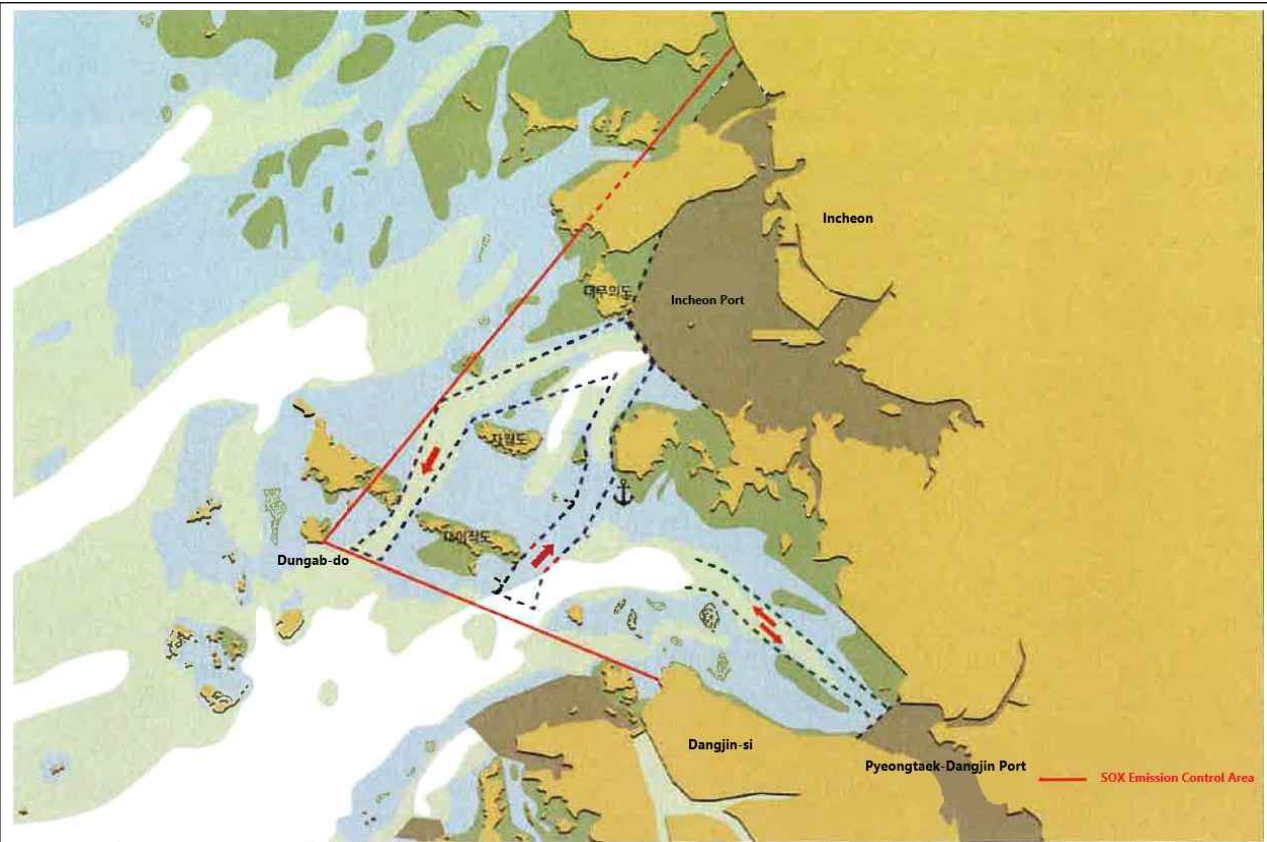
Although all possible efforts have been made to ensure correctness and completeness of the contents contained in this information service, the Korean Register is not responsible for any errors or omissions made herein, nor held liable for any actions taken by any party as a result of information retrieved from this information service.

Refer

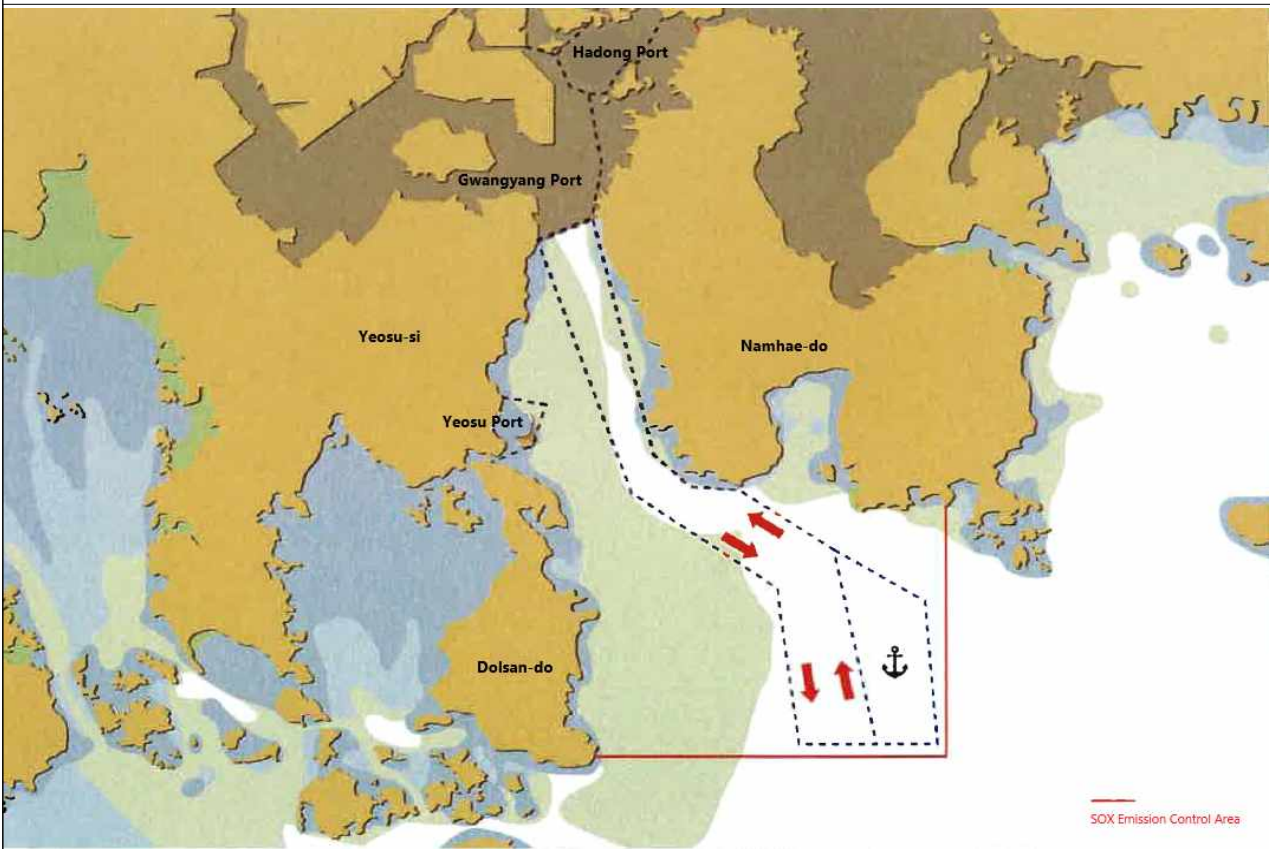
Drawing for Sox Emission Control Area



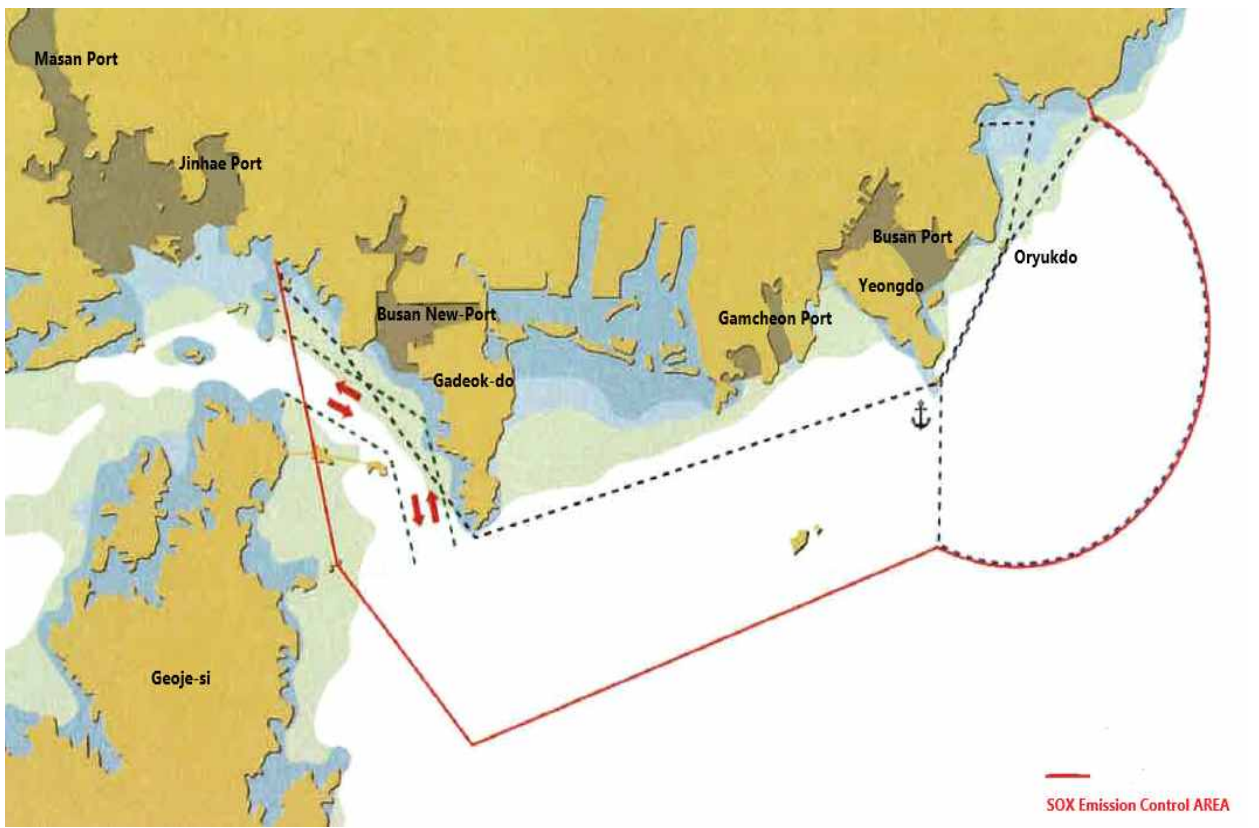
SOX Emission Control Area



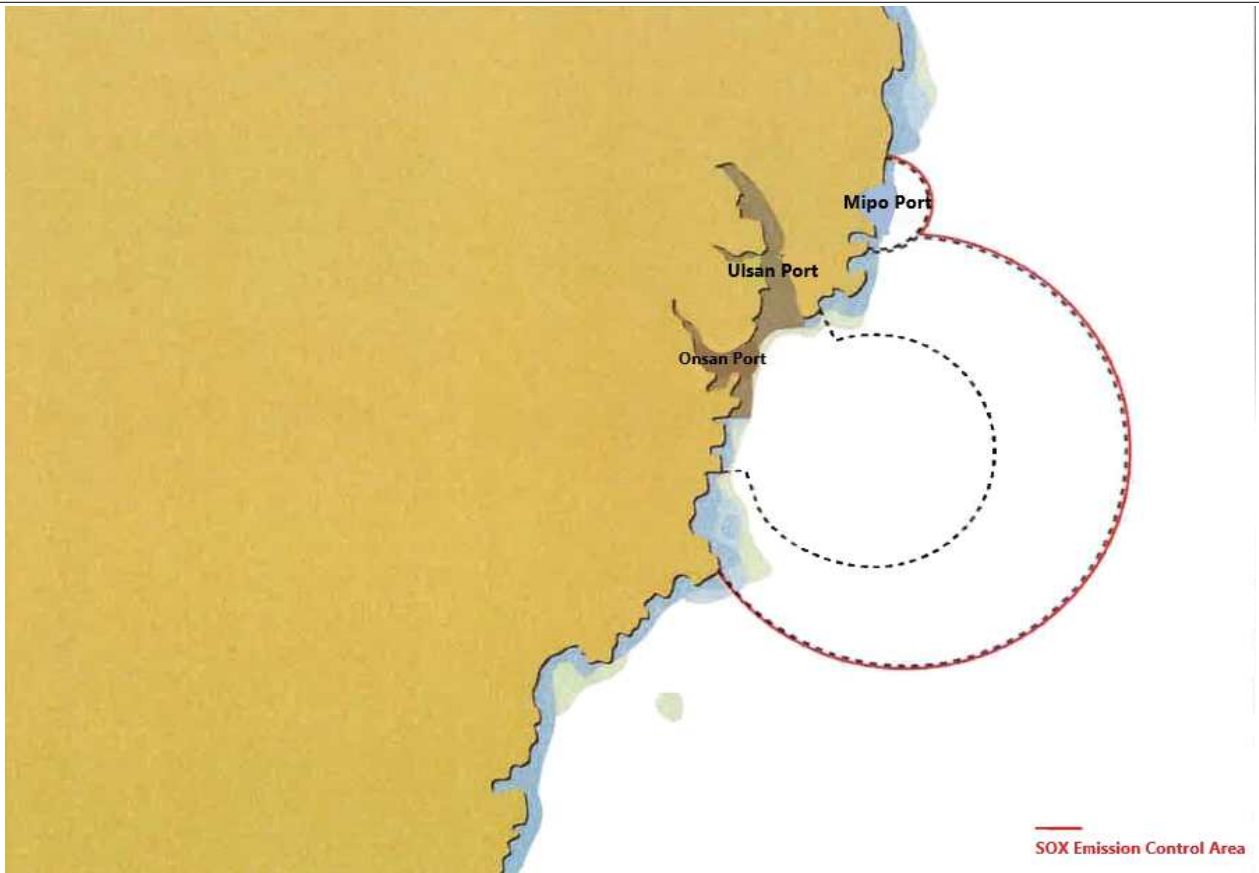
Incheon, Pyeongtaek-Dangjin Area



Yeosu, Gwangyang Area



Busan Area



Ulsan Area